



Roxtec RS BG™-tætning

Gennemføringstætning til stel og jording af et enkelt kabel eller rør.

Roxtec RS BG™-tætningen til enkeltarmede eller metalbeklædte kabler eller metalrør er ideel til stel- og jordforbindelse med brand- og tæthedskrav.



Gnaverbestandig

Produktegenskaber



Brandklassificeret



Vandtæt



Gastæt



Elektrisk sikkerhed

Byggekonstruktion



Metal

Monteringstype



Oprindeligt sleeve

Normeringer og certifikater

Brand

A-KLASSE i henhold til IMO 2010 FTP-kode

Tæthed

Gas: 2 bar (katastrofe)

Vand: 4 bar (katastrofe)

Understøtter

Stel og jording

Data om tætningskomponenter

Tætningskomponenter



RS BG™-tætning



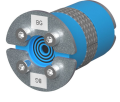
Lubrikant

For mere information, besøg venligst [roxtec.com](https://www.roxtec.com).

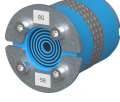


Foreslåede tætningskit

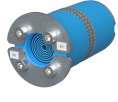
mm/kg



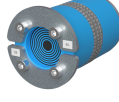
RS 25 BG AISI316



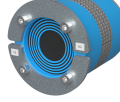
RS 31 BG AISI316



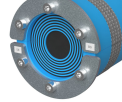
RS 43 BG AISI316



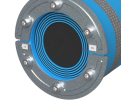
RS 50 BG AISI316



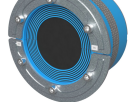
RS 68 BG AISI316



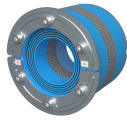
RS 75 BG AISI316



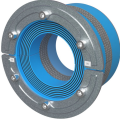
RS 100 BG AISI316



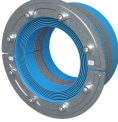
RS 125 BG AISI316



RS 100 BG AISI316
WOC



RS 125 BG AISI316
WOC



RS 150 BG AISI316
WOC

Title	Konfiguration	Åbningsmål Ø	Vægt	Art.-nr.
RS 25 BG AISI316	1x (3.6-12.0)	25 - 26	0.09	164758
RS 31 BG AISI316	1x (4.0-17.0)	31 - 32	0.08	164773
RS 43 BG AISI316	1x (4.0-23.0)	43 - 45	0.26	164774
RS 50 BG AISI316	1x (8.0-30.0)	50 - 52	0.34	125982
RS 68 BG AISI316	1x (26.0-48.0)	68 - 70	0.6	164776
RS 75 BG AISI316	1x (24.0-54.0)	75 - 77	0.7	164777
RS 100 BG AISI316	1x (48.0-70.0)	100 - 102	1.2	164778
RS 125 BG AISI316	1x (66.0-98.0)	125 - 127	1.7	164779
RS 100 BG AISI316 WOC	1x (48.0-70.0)	100 - 102	1	182934
RS 125 BG AISI316 WOC	1x (66.0-98.0)	125 - 127	1.5	190074
RS 150 BG AISI316 WOC	1x (93.0-119.0)	150 - 152	1.8	164780

The product information provided by Roxtec does not release the purchaser of the Roxtec system, or part thereof, from the obligation to independently determine the suitability of the products for the intended process, installation and/or use.

Roxtec gives no guarantee for the Roxtec system or any part thereof and assumes no liability for any loss or damage whatsoever, whether direct, indirect, consequential, loss of profit or otherwise, occurred or caused by the Roxtec systems or installations containing components not manufactured by an authorized manufacturer and/or occurred or caused by the use of the Roxtec system in a manner or for an application other than for which the Roxtec system was designed or intended.

Roxtec expressly excludes any implied warranties of merchantability and fitness for a particular purpose and all other express or implied representations and warranties provided by statute or common law. User determines suitability of the Roxtec system for intended use and assumes all risk and liability in connection therewith. In no event shall Roxtec be liable for indirect, consequential, punitive, special, exemplary or incidental damages or losses.

The Roxtec products are offered and sold in accordance with the conditions of the Roxtec General Terms of Sales. The latest version of the Roxtec General Terms of Sales can be downloaded from <https://www.roxtec.com/en/about-us/about-roxtec/general-terms-of-sales/>

We reserve the right to make changes to the product and technical information without further notice. Any errors in print or entry are no claims for indemnity. The content of this publication is the property of Roxtec International AB and is protected by copyright.

This document was generated on: 2024-04-16